

Prepared by/Return to: City of Nevada, 1209 6th Street, P.O. Box 530, Nevada, Iowa 50201

RESOLUTION NO. 071 (2025/2026)

A RESOLUTION ACCEPTING AND APPROVING THE RETRACEMENT PLAT OF SURVEY FOR RONALD E. AND ARLENE K. JENSEN – A PLAT WITHIN THE CITY’S TWO-MILE CORPORATE LIMITS, STORY COUNTY, IOWA

WHEREAS, there has been submitted to the City Council of the City of Nevada, Iowa, the Retracement Plat of Survey, Story County, Iowa, within the City’s two-mile corporate limits of the City of Nevada, Iowa, which plat involves the following described real estate:

Parcel E in the S1/2, SE1/4 of Sec.4-83-22, Story County, Iowa

WHEREAS, the Retracement Plat was submitted to the City of Nevada as required by law with the recommendation to the City Council to approve the Plat of Survey, and

WHEREAS, it is the opinion of the City Council of the City of Nevada, Iowa, that it is advisable and in the best interests of the City of Nevada, Iowa, and of the citizens thereof that the Retracement Plat of Survey be accepted and approved.

NOW, THEREFORE, BE IT RESOLVED, by the City Council of the City of Nevada, Iowa, that the Retracement Plat of Survey for Ronald E. and Arlene K. Jensen, the same being a subdivision of Story County, Iowa, and located within two miles of the corporate limits of the City of Nevada, and consisting of the real estate described above, be and hereby accepted and approved for and on behalf of the City of Nevada, Iowa.

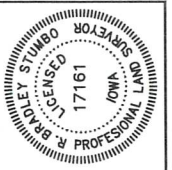
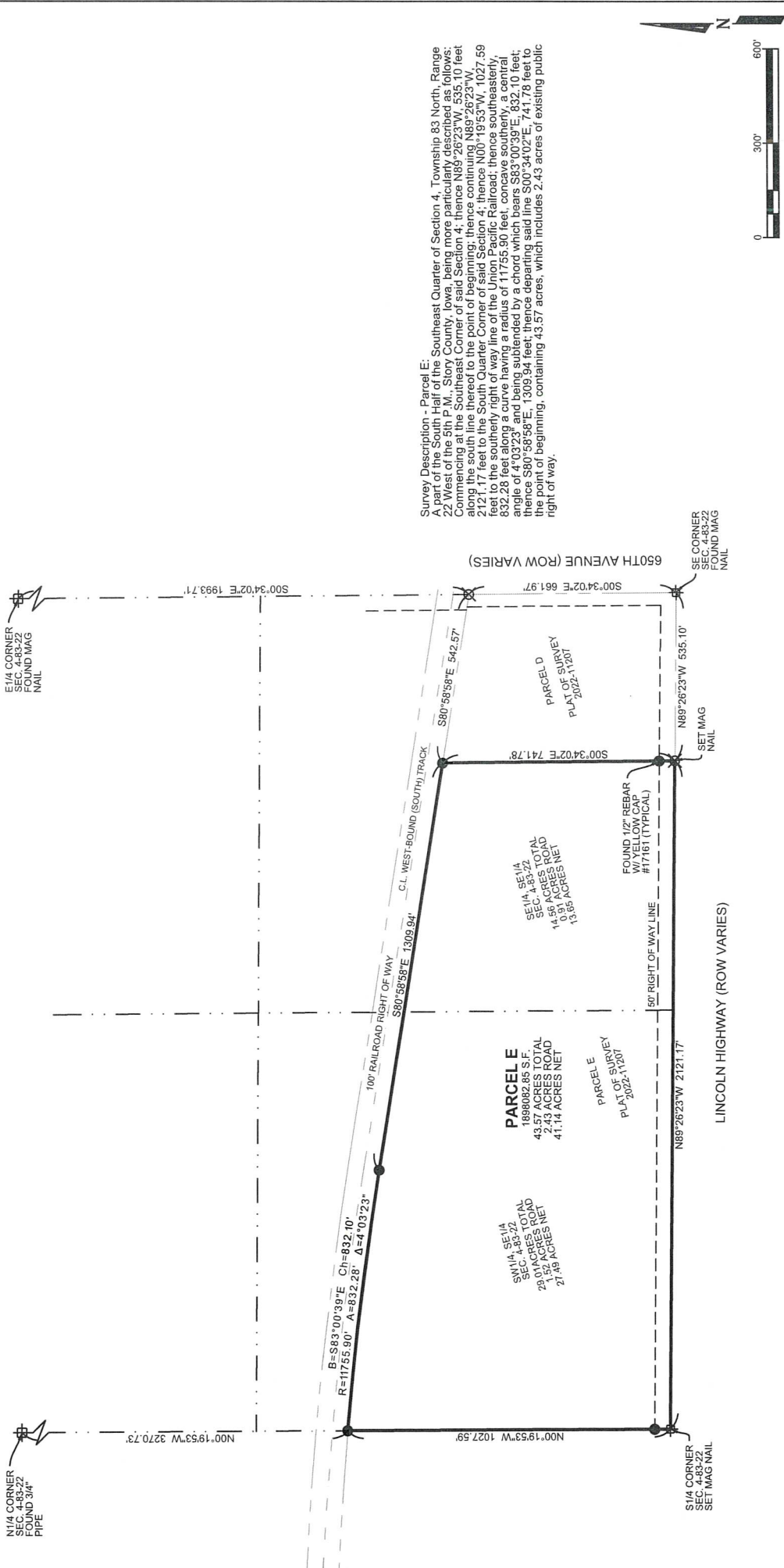
IT IS FURTHER RESOLVED, that the Mayor and the City Clerk are hereby directed to certify a copy of this Resolution to be affixed to said Plat. The City Clerk is directed to forthwith release an original copy of all subdivision platting documents to the owner for recording with the Story County Recorder.

Passed and Approved this 13th day of April, 2026.

Ryan Condon, Mayor

Attest:

Erin Mousel, City Clerk



I hereby certify that this land surveying document was prepared by me or under my direct personal supervision and that I am a duly licensed Professional Land Surveyor under the laws of the State of Iowa.

R. BRADLEY STUMBO, PLS
 License number 17161
 My license renewal date is December 31, 2027.

RETRACEMENT PLAT OF SURVEY

PARCEL E IN THE S1/2, SE1/4 OF SEC. 4-83-22,
 STORY COUNTY, IOWA

PROPRIETORS:
 RONALD E. & ARLENE K. JENSEN

REQUESTED BY: HUNTER NORLAND

JOB# 7229.340 DATE: 3/18/26 PAGE 1 OF 1 FIELDWORK COMPLETED: 3/18/26

STRAND ASSOCIATES
 Strand Associates, Inc.
 2802 South Loop Drive
 Ames, Iowa 50010
 Phone: (515) 233-0000
 FAX: (515) 233-0103